



MET: Revive Salt & Light

REPORTS FOR THE
ANNUAL GENERAL MEETING

*Bank Holiday Monday 26 May 2025
2.30 – 4.00pm at Cliff Festival*

SAMUEL CHADWICK LECTURE ROOM, CLIFF COLLEGE S32 3XG

To register for Zoom attendance, please visit: metrevive.uk/AGM
These reports and the 2024 minutes can also be downloaded from the link.



Introduction

FROM THE CHAIR

Over the last year we have continued to be in a time of transition. Our name has changed to MET:Revive, several of our office holders have changed, and our magazine and website have been renamed and restyled. There has been much work behind the scenes in order for this to happen but we are seeking to respond to where we feel the Holy Spirit is leading us and to position ourselves so we are able to serve God faithfully. I do want to thank the many people who have worked so hard to make all this happen and in particular I want to thank Rev Dr David Hull, our previous Chair. It is a great blessing that David continues in the role of Ambassador. Please do use his gifts and graces by inviting him to come to speak on MET:Revive in your local situation.

I am determined that evangelicals within the Methodist Church have an important role to play in the life of the Church. The Methodist Church is built on the evangelical faith with an emphasis on the centrality of the scriptures. With our focus on Biblical Revelation, Renewal and Revival we are well poised to be salt and light both within the Methodist Church and outside.

I am not for one moment saying only evangelicals contribute to the developing life of the Methodist Church, but I am certain that the Church would be worse off without us. In that sense I hope we will continue to build a strong base of evangelicals within the Methodist Church and actively and intentionally seek to increase the membership of MET:Revive. Wouldn't it be great if every MET member could invite at least one other person to consider membership?

Thank you for every bit of support you already give to MET:Revive.

As we look forward to this coming year faithful folk will continue to support the everyday work of MET. Please pray for them and for all of us. I should particularly value your prayers as I seek to grow into this role. I am always happy to have conversations with people and indeed to visit local situations where possible, so do not hesitate to ask.

May God bless you as we move forward together.

Chris Briggs
Chris Briggs

Reports

MET:Revive Ambassador

David Hull

I was delighted to have been appointed as MET:Revive Ambassador at last year's AGM, taking up the role at the beginning of this year. At their last meeting, the trustees agreed a job description as follows:

- An itinerant ministry of teaching, preaching, and encouraging Methodist evangelicals 'on the ground'. This includes an objective of increasing the membership of MET:Revive.
- Continuing to lead the development of the Association of Wesleyan Evangelicals (AWE) as its Chair. AWE is an initiative that began within MET:Revive with a view to becoming an independent organisation.
- Exploring the possibilities of developing a network of regional MET:Revive advocates, who would promote the work of MET:Revive and seek to further our objectives within their regions.
- Additional responsibilities aligned with the role's purpose, as agreed between the role holder and trustees, balancing organizational needs with the role holder's gifts and capacity.

My travels across the Connexion as Chair of MET:Revive revealed three consistent themes in Methodist churches:

1. There's a great spiritual thirst and openness to the Holy Spirit, with many asking how we move from maintenance to mission.
2. Many churches express a desire for effective evangelism, wondering how to help people take the next step from community activities to exploring the Good News of Jesus.
3. There's a widespread sense of being overwhelmed by denominational and legal administration.

This autumn, I hope to embark on a fresh tour titled 'Remember to Forget', this time as MET:Revive Ambassador. Each visit will include the offer of a 'Moving in Mission' afternoon leadership workshop focused on practical applications and a 'Remember to Forget' evening celebration with worship, preaching, and prayer, along with resources for ongoing fellowship and prayer.



We are dependent on local hosts who can help arrange:

- A local venue
- Worship leaders/musicians
- Invitations to neighboring churches to make this a regional gathering
- Help with travel and accommodation costs from local churches where possible
- Could you offer to be a local host, or speak with your minister about hosting us? To explore hosting a visit, please contact my PA, Janet Walker: janet.walker@metrevive.uk / 07799 068 539.

Following a number of enquiries after the last tour, I hope some events will begin before autumn. Additionally, an AWE tour is planned for the autumn of 2025/spring 2026, which is also part of this role. I began the role in earnest having been commissioned at the MET South West Conference, at which I was the speaker. I'm delighted to report that a few new members even signed up that weekend!

As we approach the 300th anniversary of the Evangelical Revival, I hope we will be continually stirred up to prioritise prayer for revival and deepen discipleship as we seek renewal as evangelicals within Methodism.

Vice-Chairs' Report

Liz Miller and Gareth Higgs

There have been a number of visible changes to MET:Revive this year. I trust you are enjoying the new look to our magazine and we are thankful to Marian for all the work she does on this publication. We were pleased to commission our new Chair, Chris Briggs, at our Revive Gathering in the autumn and say farewell to David Hull, who has become the Ambassador for MET:Revive. It was a pleasure to commission David in this role at the MET South West conference in January. Alongside these changes there have been less visible things occurring. The final part of MET:Revive becoming a Charitable Incorporated Organisation has been completed with the merger of the old with the new charity. Our Safeguarding Policy needed a major update and we were pleased to have help from Christian Safeguarding Services with this.

We are grateful to Nicola Briggs for being our main representative on our stall at Cliff College Festival Weekend and at the Methodist Conference.

AWE: The Association of Wesleyan Evangelicals

Rev. Dr David Hull

The Association of Wesleyan Evangelicals (AWE) continues to grow and develop in exciting ways. Following our initial gathering of national leaders in Bristol in January 2022, we have seen a warm fellowship and common vision emerge as we work together to rekindle the Wesleyan flame in the motherland of Methodism.

Our vision to 'reform the nation, particularly the Church; and to spread scriptural holiness over the land' has been formalised in a

Memorandum of Understanding which outlines our partnership structure, and is in the final stages of being agreed by the the Independent Methodist Connexion, the Wesleyan Reform Union, the Free Methodist Church, and MET:Revive. We now have a regular pattern of meetings established, for business and prayer meetings, both in-person and online.

A significant development has been the establishment of the AWE Academy under the directorship of Dr Richard Saunders-Hindley, with a vision of 'Thinking like Jesus ... Becoming like Jesus ... Living like Jesus'. The Academy held its first study day in March 2024 on 'Growing Disciples - Growing Churches' at Jump WRU Church, with very positive feedback from the 20 participants. This has led to plans for a programme of study days in 2025.

The Academy is developing agreements with partner denominations to support their ministry training programmes. Following conversations at academic conferences, key leaders of US Wesleyan evangelical seminaries have expressed enthusiasm for exploring partnerships with us.

Looking ahead, we are developing proposals for a tour in the autumn of 2025/spring 2026. We shall be building on the positive experiences of local events where we've encountered a real hunger for deeper discipleship and a recognition that many Methodist folk 'on the ground' feel isolated and are encouraged by the work of AWE.

As we look towards the 300th anniversary of the Evangelical Revival, please pray for us as we continue to work together for effective evangelism, deepening discipleship, and powerful prayer across our Wesleyan family.

May is Christianity Month

Chris Briggs

MET:Revive is pleased to support and publicise Christianity Month. We meet for our AGM during Christianity Month but the AGM reports will be available a little earlier and even at a late stage close to May it is possible to raise the profile of Christianity Month by posting the logo (available on our website) and encouraging people to realise that May is Christianity Month.



If you are still a little unclear about the purpose of Christianity Month This is a new vision. We are in the third year of Christianity Month and this is a relatively easy way to celebrate the many changes that have happened in the world and in lives because of the Christian faith. We can use May as a month for intentional Christian outreach and witness as we celebrate the effect Christianity has had for good around the world. We do indeed want to witness all the year round, but having a month when we gather resources and encourage one another to share in the same message has the potential for far greater impact. Apart from that we know the theory of constantly being a witness for Jesus, but we probably also recognise that many Christians find that a challenge. This is a simple vision to get behind. There is no formula, no training, no charge. You are encouraged to do whatever you want

to reach out to others and to share good news. You can decide to do something for this year and it is never too early to plan for next year! Leaders in churches are particularly important as they are often the gatekeepers, so if you are a leader I hope you might prayerfully consider getting involved with Christianity Month. I am always happy to have a conversation about that.

As an example of what is possible in a church this year for Christianity Month in one church we have arranged a textile exhibition called “Good Grief” over “Dying Matters” Week in May, a Community Fun Day, a Comedy Night with a Comedian who is a Christian, a craft workshop working with wool (obvious links to the Christian faith), an afternoon tea to link with the commemoration of VE Day, a Holiday Club, visits into schools, and our usual church activities which will have Christian literature freely available. Sunday services will be more seeker friendly and evangelistic. That is quite a heavy programme but the beauty of Christianity Month is that you can give it a go just by putting on one event. Maybe you have a monthly coffee morning and you could advertise this as linked with Christianity Month and arrange to have some free gospels on hand. You could put the Christianity Month logo outside. Perhaps you could invite a local preacher or another speaker to share something about how the Christian faith has changed the landscape of the world!

Prayer

Roz Addington

REVIVE GATHERING

(formerly known as the Revive Prayer Weekend)

This took place from Friday 15th – Sunday 17th November at the King’s Park Conference Centre in Northampton. Many thanks to John Hogarth & Marian Izzard for organising this event and to Hilary Balsdon for her sensitive leading of worship.

The theme of the weekend was Awestruck – The Bible’s big picture. The Rev David Hull led us through ‘The greatest story ever sung’, using the words of Handel’s Messiah in four sessions: A Glorious

Revelation; A Glorious Reign; A Glorious Resurrection and Worthy is the Lamb. The final session on the Sunday morning also included Holy Communion. This final celebration on Sunday also included a farewell and thanks to. David Hull as Chair of MET.

On the Saturday, Jacqui Parkinson led us through two fascinating sessions on the ‘Greatest story ever sewn’ bringing along a few of her amazing sewn banners illustrating Bible themes and stories by way of illustrations. She began the session with ‘Starting Small’ and following it with ‘Ending Large’. She shared instances of how her work drew people towards Christ. Enormous appreciation was shown of her story and work which left us all spellbound!

The Saturday evening celebration included the induction of Rev Chris Briggs as the new Chair of MET. Then on the Sunday morning, Chris led us through a session on ‘The Almost Gospel’ in which we were encouraged and challenged to think about what it really means to be a Christian. This session also included prayers for revival.



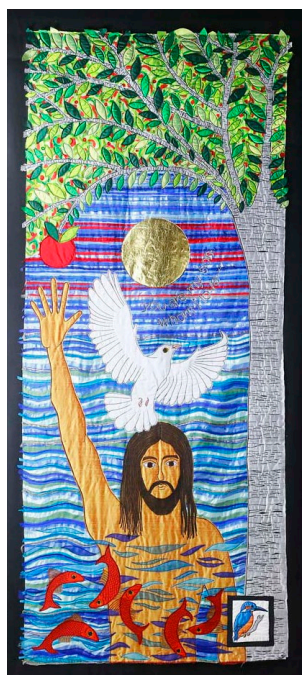
Early morning prayers were led by Roz Addington. In addition, there was a room dedicated to prayer with seven different prayer stations where there was the opportunity to pray in a more creative way using interactive materials. This was much appreciated by many of the conference attendees.

PRAYER FOCUS

This remains an important and integral part of the Re:vive magazine. It remains challenging, especially when grappling with fast moving events across the nation and world, wondering how much will have changed by the time the magazine is sent out! But prayer is so important in these dark and difficult days, and we need to focus on God and keep our hope in Him.

SUNDAY EVENING PRAYER MEETINGS

The prayer meeting on a Sunday evening continues with a dedicated group of people who show appreciation of the meeting. There are generally around 20-30 participants most weeks, though this can fluctuate depending on other commitments people have on a Sunday evening. There is a great eagerness for the prayer meeting as people recognise the need for prayer across the church, nation and world. Devotions are led by different people each week which brings a variety of insight and perspective on different issues. We continue to be open to the promptings of the Holy Spirit and visions and pictures are shared along with relevant Bible passages and songs. Sometimes it feels as though an hour is not long enough and on occasions we have prayed for longer.



Accounts Summary

INCOME LEVEL

Our Partnership income has dropped from 2023 to 2024. Bluntly, this is due to a drop in membership; some members have died and a number have ceased to continue their membership after their departure from the Methodist Church of Great Britain. Our income from general donations was similar to the previous year, so we are very grateful for all your generous additional contributions. Overall, income was slightly down and this reflects the fact that we did not initiate a specific appeal during the year, but we are grateful to those of you who have felt able to continue to give for general and specific areas of the work of MET:Revive.

CHANGES IN EXPENSES

Inflation has hit us all and our costs overall have been slightly higher than the previous year. Costs of conferences have been greater than anticipated, but fortunately some of this has been offset by additional income in this respect. To raise awareness of MET:Revive, there has been an increase in spending on advertising and publicity. This has included the 'MET Local' events which David Hull took to various places around the country; our rebranding along with an updating of our magazine; and a partnership with Shine Your Light. MET:Revive events including the Revive Gathering Weekend and participation at the MET South West Conference, were successful and we are most grateful for the generosity of those who support these events.

Summarised Accounts for the year ended 31 August 2024

RECEIPTS	Unrestricted funds	Restricted funds	Total funds	Year ended 31 August 2023
	£	£	£	£
Annual Subscriptions	23,436		23,436	24,626
Donations	17,697		17,697	17,901
Ambassador appeal		150	150	0
Development Worker appeal		0	0	35
Director of Ministry appeal		1,660	1,660	12,807
Rising Generation appeal		750	750	700
Conferences	9,947		9,947	7,428
Other including Gift Aid	12,346	849	13,195	13,489
<i>Sub total</i>	63,426	3,409	66,835	76,986
Asset & Investment sales			0	
Total receipts	63,426	3,409	66,835	76,986

PAYMENTS	Unrestricted funds	Restricted funds	Total funds	Year ended 31 August 2023
	£	£	£	£
Administrative Expenses	15,460		15,460	14,962
Executive Expenses	3,665		3,665	6,188
Advertising and Publicity	5,154		5,154	2,532
Computer Expenses	2,380		2,380	2,296
MET Connexion	12,613		12,613	10,886
Development Worker (Interim)	0		0	4,368
Marriage & Human Relationships Expenses	0		0	0
Expenditure on MET conferences	12,058		12,058	7,703
AWE expenses	1,349		1,349	80
Legal and Professional	0		0	99
Tithe	7,300		7,300	6,100
Other	1,088		1,088	2,455
<i>Sub total</i>	61,067	0	61,067	57,669
Asset & Investment purchases			0	
Total payments	61,067	0	61,067	57,669

	Unrestricted funds	Restricted funds	Total funds	At 31 August 2023
	£	£	£	£
Net receipts/(payments)	2,359	3,409	5,768	19,317
Transfers between funds	0	0	0	0
Cash funds last year end	69,515	24,858	94,373	75,056
Cash funds this year end	71,874	28,267	100,141	94,373

DONALD ENGLISH YOUNG SCHOLARS FUND

This fund is available to assist people under 40 in their theological studies. Please do encourage anyone who might qualify to apply. Contact Gareth Higgs for more information via admin@metrevive.uk

OTHER WAYS TO SUPPORT MET

We are dependent upon the generous financial giving of our members. Your ongoing support is invaluable. Please consider whether you can make an extra donation to

MET:Revive, either as a lump sum or regular giving. This can be done via our website: metrevive.uk/donate. Please also consider giving a legacy in your will. This can be a tax efficient way of disposing of assets. If you require further information, please contact our Administrator.

For those paying by standing order, please check your bank has the correct account details and is making payments at least at the level of our latest rates. Account name: MET:Revive, Clydesdale Bank (Virgin Money), Sort code: 82-11-07 Account number: 00224700.



AGM Agenda

- Devotions led by the Chair
- Acceptance of the 2024 AGM Minutes
- Approval of the Accounts
- Reports
- Ambassador Update
- Vision for the Future
- AOB (Items submitted in advance to the Administrator by 19 May)
- Conversation and prayer
- Closing prayer

The 2024 minutes and a digital version of these reports can be downloaded from metrevive.uk/AGM. On the same page, you can also register for attendance by Zoom.

To allow for proper consideration, please raise any significant questions or concerns or submit notice of Any Other Business before 19 May by emailing admin@metrevive.uk